



HF-XX-E SUB-11

HF-XX-DE

**SOLAR HOT WATER STORAGE TANKS WATER
SUBMITTAL SHEET**

Page 1 of 3.

JOB NAME _____
LOCATION _____
ARCH./ ENGR. _____
WHOLESALER _____
MECH. CONTRACTOR _____
MODEL NO. _____
GALLON CAPACITY _____

STANDARD FEATURES

R-12 INSULATION
THERMOPLASTIC JACKET
STAINLESS STEEL COLD INLET DIP TUBE
LARGE SMOOTH WALL HEATING COILS
REMOVABLE THERMAL WELL
ALL CONNECTIONS ON TOP.
ALL STAINLESS STEEL CONSTRUCTION
T+P VALVE AND DRAIN ARE FACTORY INSTALLED
ELECTRIC BACKUP PROVIDED WITH ELECTRICAL BOX, 3500 WATT HEATING
ELEMENT, THERMOSTAT, AND CONTROL.
PRORATED LIMITED LIFETIME WARRANTY
CONFORMS TO UL STD 174
CERTIFIED TO CAN/CSA STD C 22.2 NO.110-94



HF-XX-E SUB-11

HF-XX-DE

**SOLAR HOT WATER STORAGE TANKS WATER
SUBMITTAL SHEET**

Page 2 of 3.

Solar hot water storage tanks are made in 60, 80 and 115 gallon units. Units are available with one coil, two coils or no coils. The heat exchanger coils can be connected to the solar collectors. Units without coils can be connected to external brazed plate heat exchangers. All units are available with or without built-in electric backup.

Units with electric backup are provided with a heating element, thermostat, and controls that can heat the tank if solar heat is not available. All units are provided with a removable thermal well to accept the solar control thermostat or thermistor. All electric backup units are provided with a high quality low watt density 240 volt AC, 3500 watt element.

Units are all stainless steel construction.

Model	Storage Volume (gals)	Top Coil Heating Surface (sq. ft.)	Bottom Coil Heating Surface (sq. ft.)	Dimensions (Inches)		Pipe Connections	Max. Working Pressure (psi)	Approx Shipping Weight (lbs)
				Height	Diameter			
Single Coil - No Electric Backup								
HF-115	115	-	8.9	74.0	28.0	1" NPT	150	175
HF-80	80	-	8.0	56.0	28.0	1" NPT	150	140
HF-60	60	-	8.3	62.0	23.5	1" NPT	150	125
Single Coil with 3500 watt Electric Backup								
HF-115-E	115	-	8.9	74.0	28.0	1" NPT	150	180
HF-80-E	80	-	8.0	56.0	28.0	1" NPT	150	145
HF-60-E	60	-	8.3	62.0	23.5	1" NPT	150	135
Dual Coil - No Electric Backup								
HF-115-D	115	7.4	8.9	74.0	28.0	1" NPT	150	205
HF-80-D	80	7.4	8.0	56.0	28.0	1" NPT	150	175
HF-60-D	60	7.4	8.3	62.0	23.5	1" NPT	150	165
Dual Coil with 3500 watt Electric Backup								
HF-115-DE	115	7.4	8.9	74.0	28.0	1" NPT	150	215
HF-80-DE	80	7.4	8.0	56.0	28.0	1" NPT	150	185
HF-60-DE	60	7.4	8.3	62.0	23.5	1" NPT	150	175
Storage Only - No Coil, No Electric Backup								
HF-115-ST	115	-	no coil	74.0	28.0	1" NPT	150	170
HF-80-ST	80	-	storage	56.0	28.0	1" NPT	150	130
HF-60-ST	60	-	only	62.0	23.5	1" NPT	150	115

Quality Design and Construction

- Tanks and coils are all stainless steel
- Large smooth stainless steel coils, no finned tubing to collect lime and sediment.
- Includes over 2" of insulation, less than 1 deg./hr., R-12 +
- Thermoplastic jacket will not rust or corrode.

Easy Installation

- All pipe connections are on top for a neat, clean installation.
- Brass drain and relief valves are factory installed
- Includes thermostat well to control solar input
- Large 4" X 10" electrical box with pre-wired heating element, thermostat, and high limit on electric backup units.
- Long life, low watt density element.



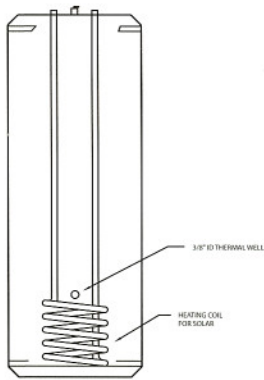
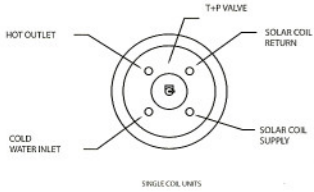
HF-XX-E SUB-11

SOLAR HOT WATER STORAGE TANKS WATER SUBMITTAL SHEET

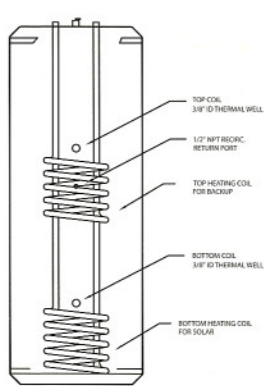
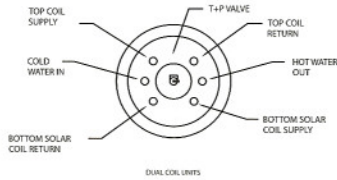
HF-XX-DE

Page 3 of 3.

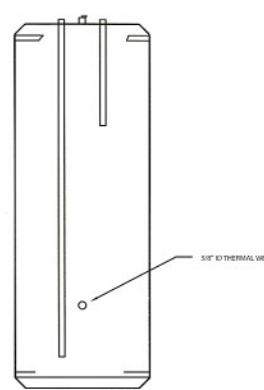
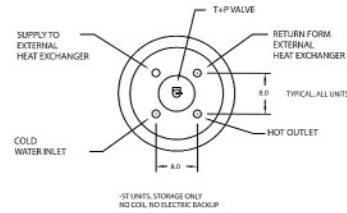
SINGLE COIL UNITS



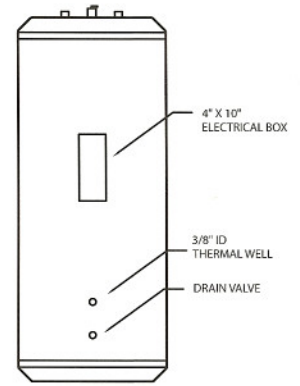
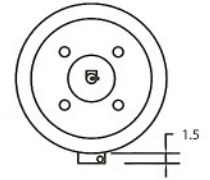
DUAL COIL UNITS



STORAGE UNITS



ELECTRIC BACKUP UNITS



Heat exchanger coil outputs				
Model	Max. Recovery (gal./hr.) Top Coil	Max. Recovery (gal./hr.) Bottom Coil	Water Flow Through Coil (gal./min.)	Pressure Drop Through Coil (Ft. Water)
115 Gal. Units	190	214	10.0	3.9
80 Gal. Units	180	214	10.0	3.6
60 Gal. Units	185	214	10.0	3.5

Note: All Ratings are based on 180 degree F boiler water supply and 50 degree F cold Water inlet. In the interest of continuous improvement, specifications are subject to change without notice.

For all units with 3500 watt Electric Backup				
Model	First Hour Rating (gal./hr.)		Continuous Rating (gal./hr.)	
	140 F	115 F	140 F	115 F
115 Gal. Units	73.9	80.0	15.9	22.0
80 Gal. Units	55.9	62.0	15.9	22.0
60 Gal. Units	45.9	52.0	15.9	22.0



Conforms to UL STD 174
 Certified to CAN/CSA STD C22.2 No.110-94

